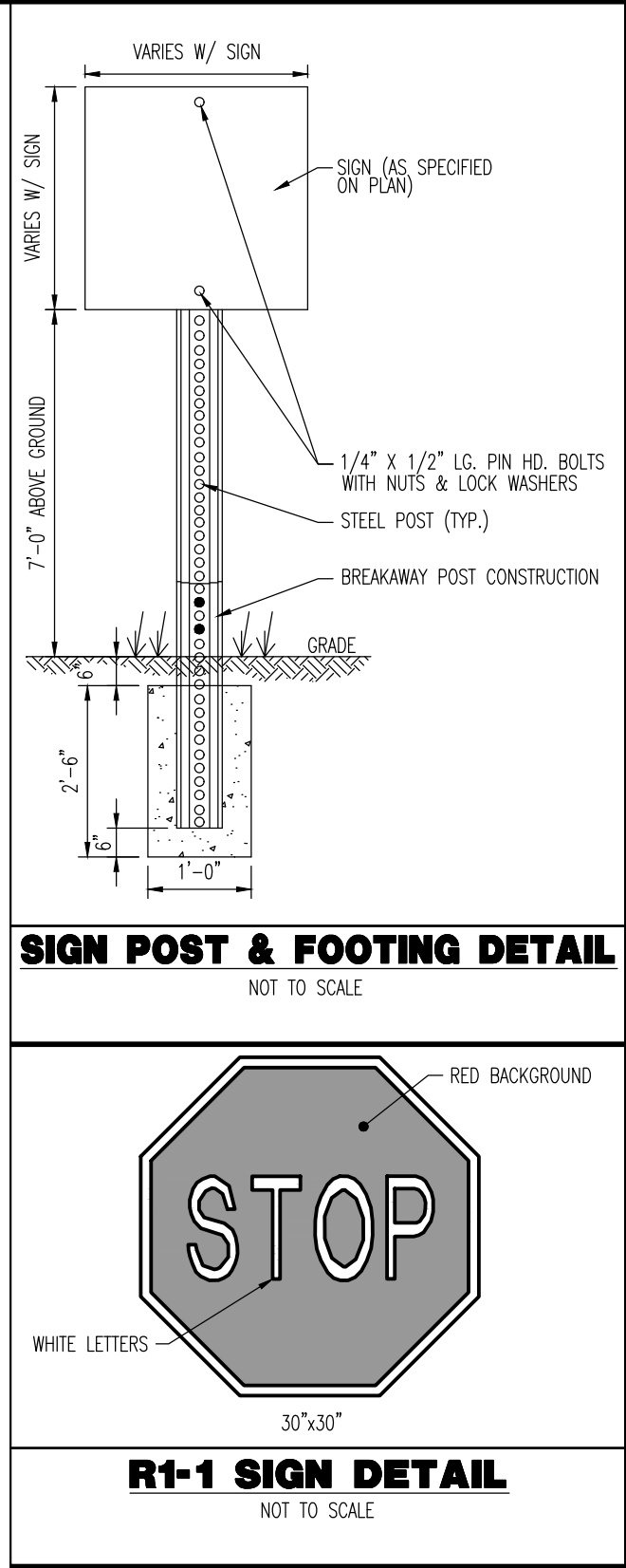
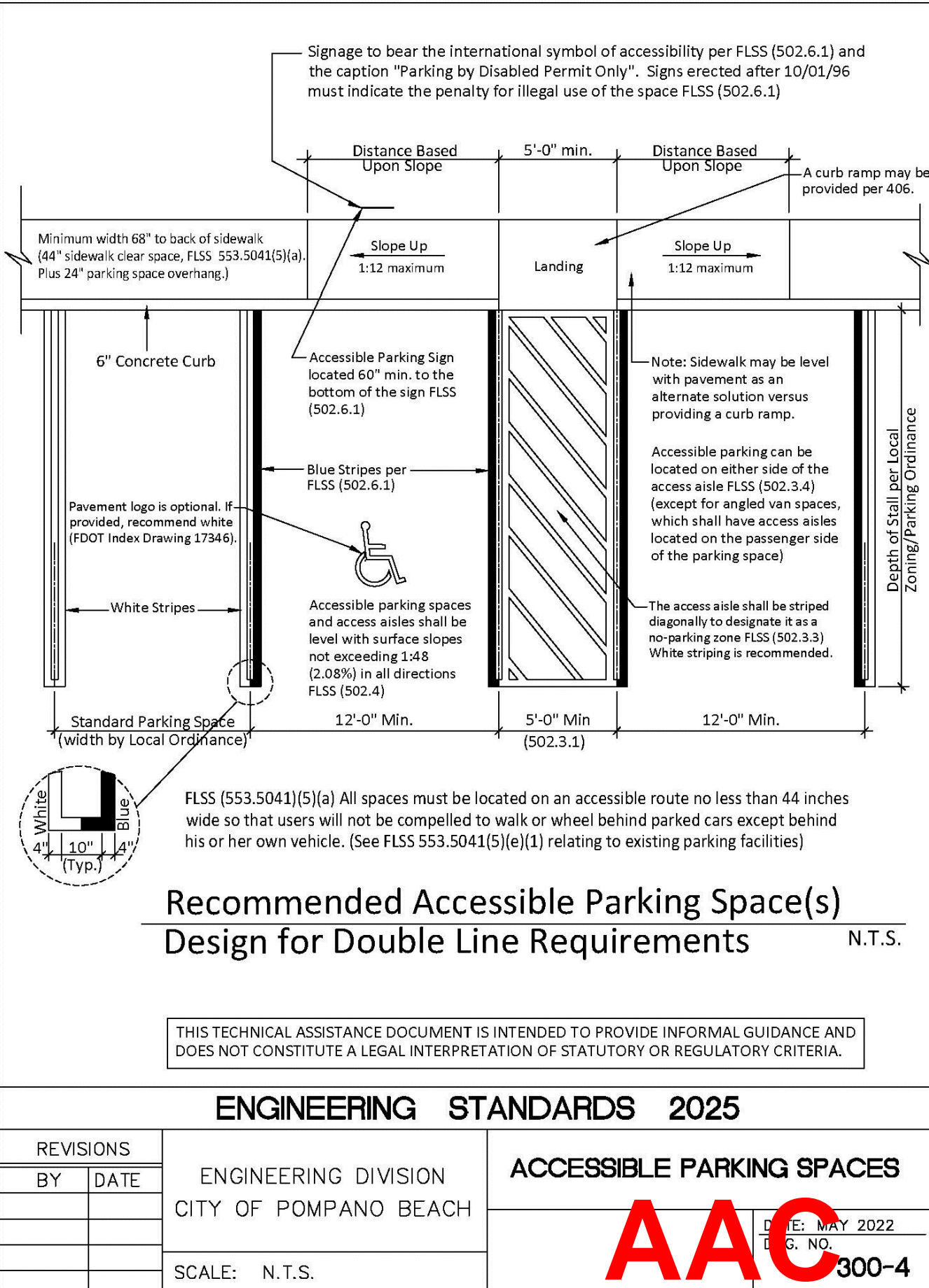
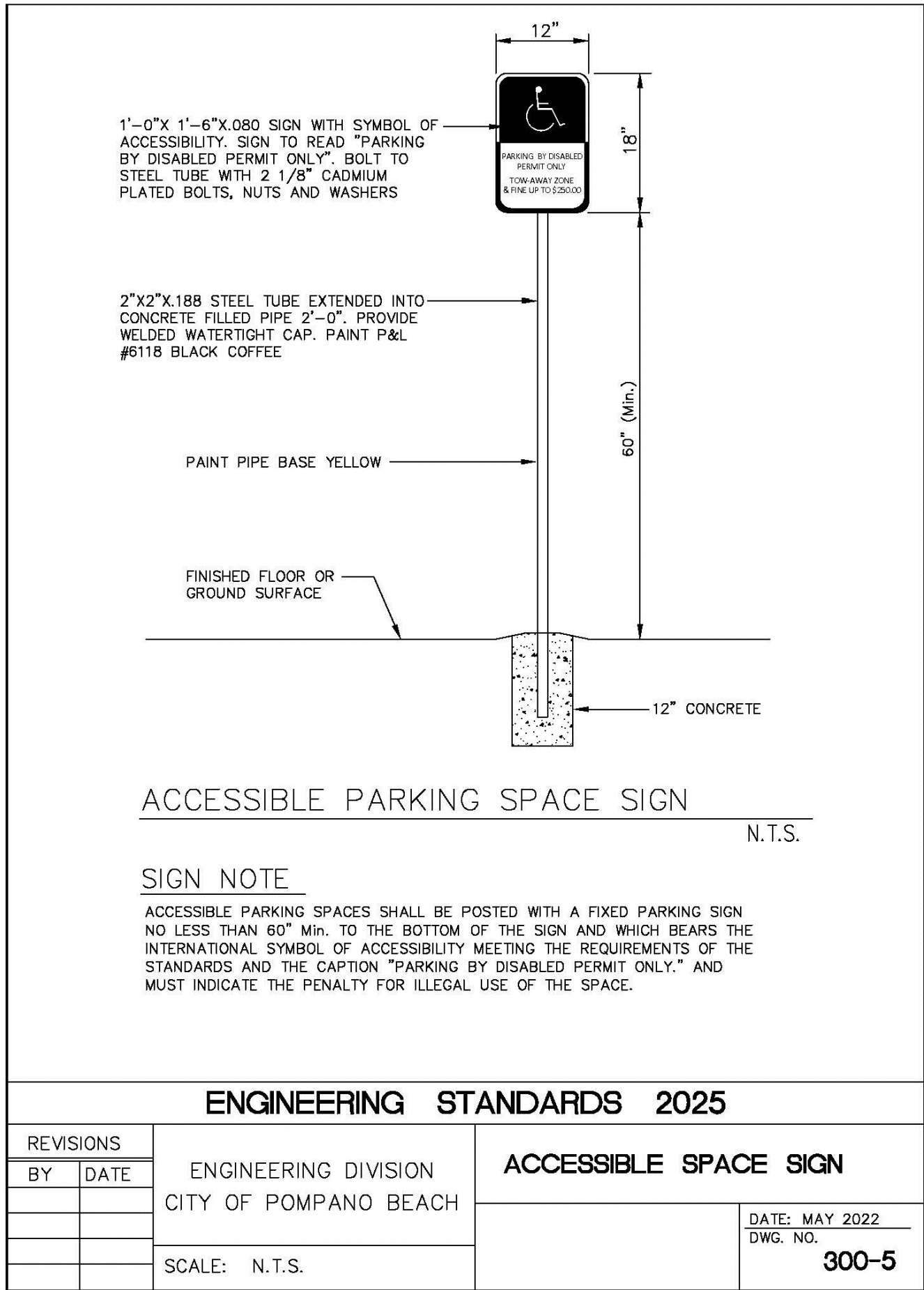
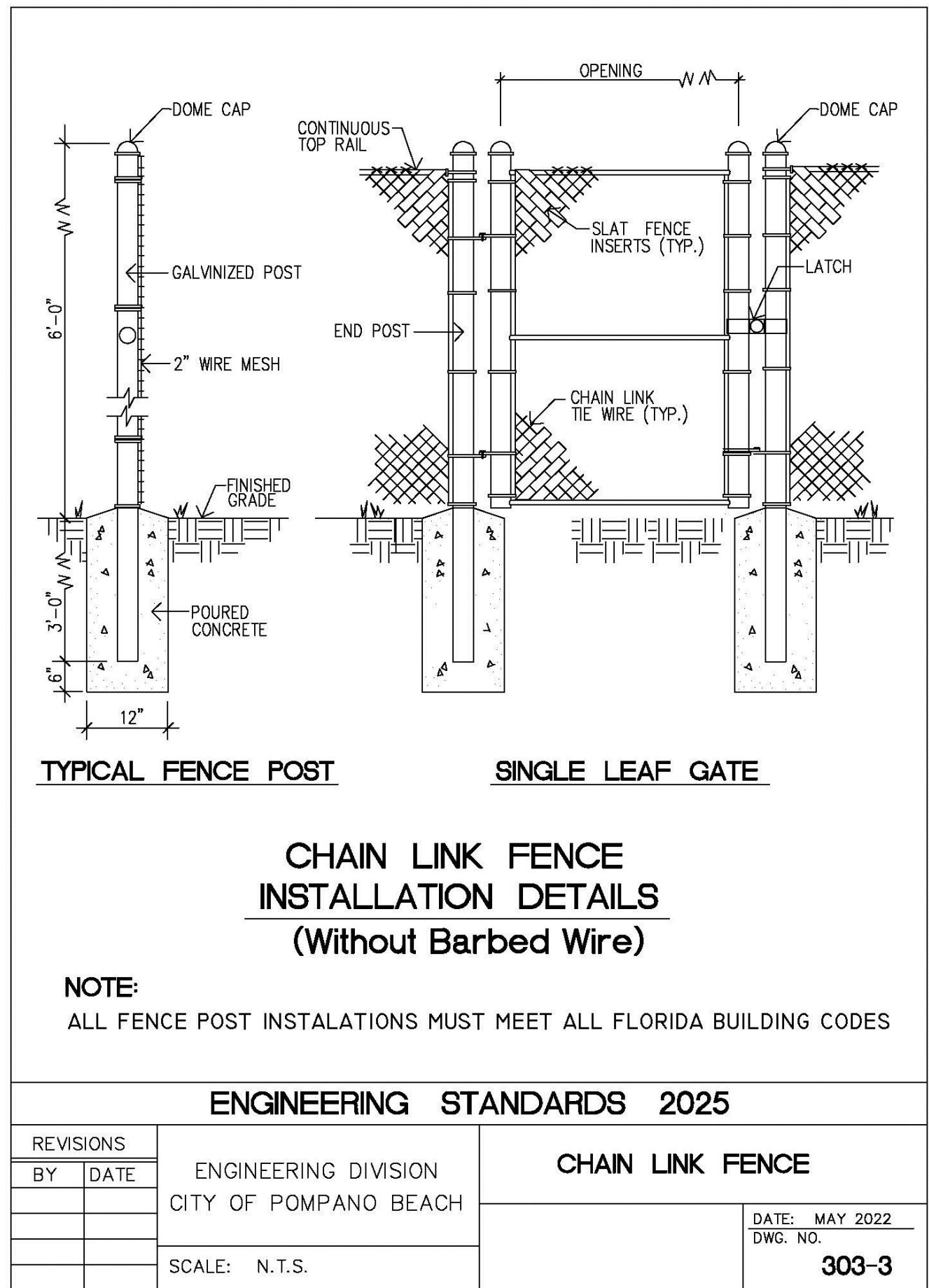
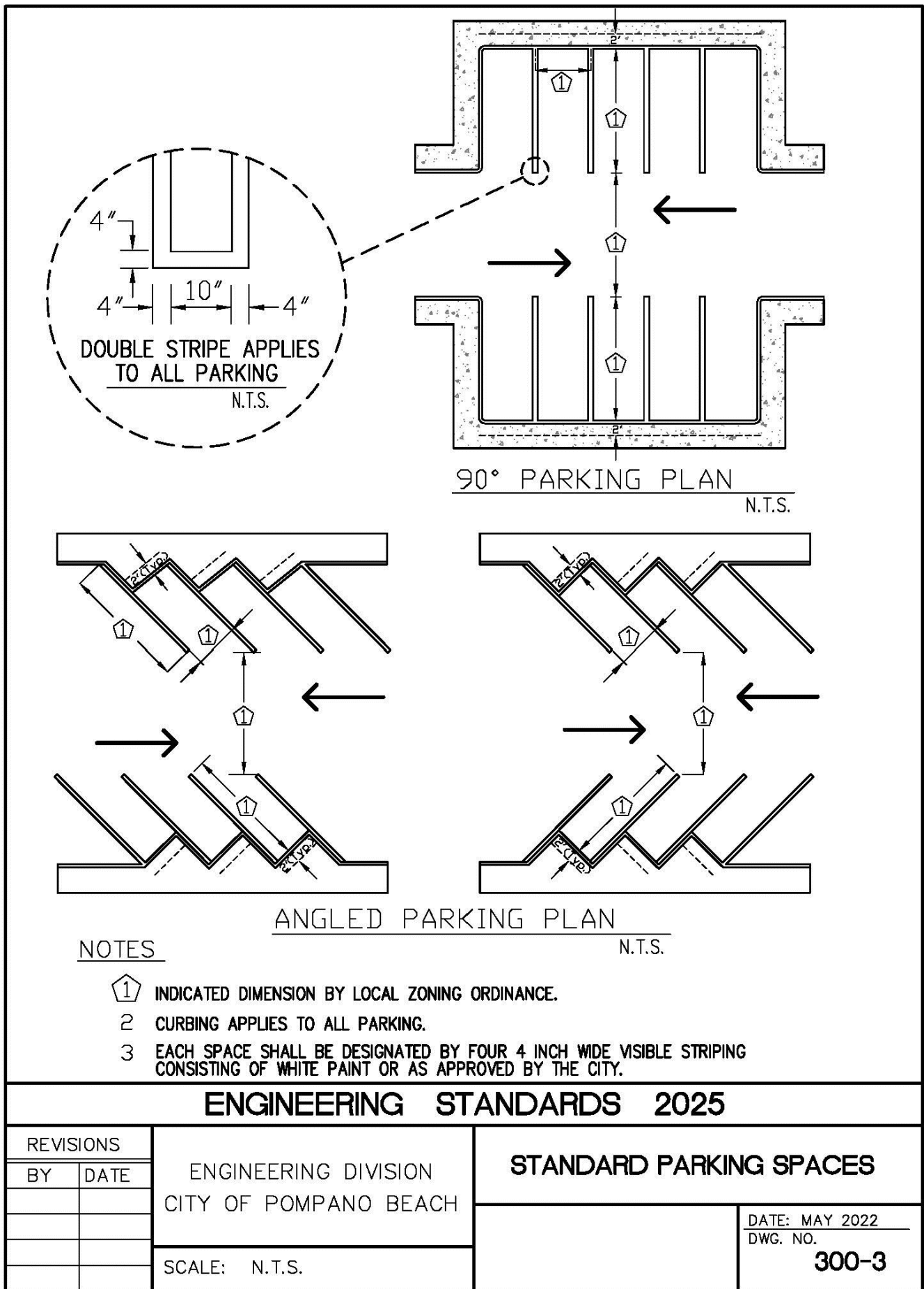


Plotted: 09/09/25 - 12:36 PM, By: confroom, Product Ver: 25.0  
File: F:\DEPC PROJECTS\5758 UT 20 LLC\25-01613 Pompano Beach FL\Dwg\Entitlements\057582501613SD2.dwg, ----> C1.02 SITE DETAILS



**DYNAMIC ENGINEERING**  
LAND DEVELOPMENT CONSULTING • PERMITTING  
GEOTECHNICAL • ENVIRONMENTAL  
TRAFFIC • SURVEY • PLANNING & ZONING

100 NE 5th Avenue  
Suite 82  
Delray Beach, FL 33483  
T: 561.921.8570

Offices conveniently located throughout the United States:  
New Jersey | Delaware | Florida | Maryland | Pennsylvania | Texas  
Florida Certificate of Authorization No. 32333

www.dynamiccec.com

ÁNGEL PIÑERO

PROFESSIONAL ENGINEER  
FLORIDA LICENSE No. 88047  
DATE:

**811**  
Know what's below  
Call before you dig

PROTECT YOURSELF  
ALL STATES REQUIRE NOTIFICATION OF  
EXCAVATORS, DESIGNERS, OR ANY PERSON  
PREPARING TO DISTURB THE EARTH'S  
SURFACE, OTHERWISE IN ANY STATE  
FOR STATE SPECIFIC DIRECT PHONE NUMBERS VISIT:  
WWW.CALL811.COM

TITLE:  
**SITE DETAILS**

SCALE: (H) NOT TO SCALE  
(V) SCALE  
DATE: 04/15/2025  
PROJECT No.: 5758-25-01613

SHEET No.: **C1.02**  
Rev. #: **2**